



# CAD MAPPER



## SYSTEM IMPLEMENTATION WITH QUEUES ENFORTH DEVELOPMENT

*CAD Mapper* is implemented by Queues Enforth Development using MapInfo's *MapX* technology and your municipality's GIS data. A Queues Enforth Development consultant will work with your department to develop highly accurate maps incorporating custom detail such as fire hydrant locations and information, building footprints, and patrol sector boundaries. Queues Enforth Development also provides support for installation and getting started, and ongoing maintenance to keep streets up to date.

## CAD MAPPER PRICING

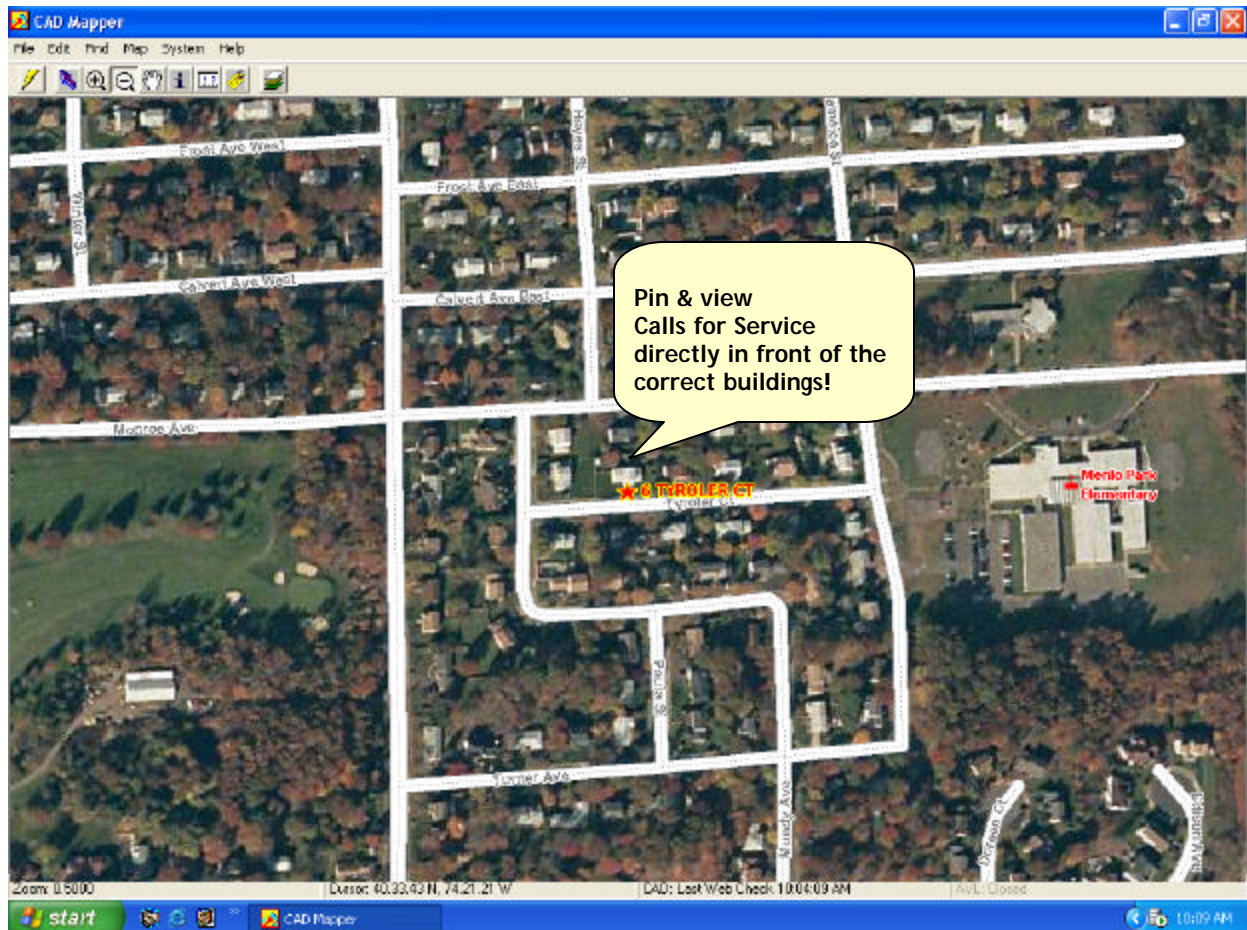
CAD Mapper is priced competitively with computer-aided dispatch mapping products that do not match the presentation quality, detail, accuracy and customization of Queues Enforth Development.

## FOR MORE INFORMATION

To learn more about *CAD Mapper*, call your Queues Enforth Development representative at (781) 870-1100. Or visit our website at [www.qed.com](http://www.qed.com) and send an email directly to [corporate@qed.com](mailto:corporate@qed.com).

## HARDWARE & SOFTWARE RECOMMENDATIONS

Intel Pentium III or higher, 667 MHz processor, 32-Mb video memory, 256 Mb RAM (more if orthophotos are included), CD drive, 17" monitor, Windows NT/2000/XP with most recent available service pack installed



© 2004 Queues Enforth Development, Inc. All rights reserved. MapInfo and the MapInfo logo are registered trademarks of MapInfo Corporation. All other marks are the property of their respective holders.



Queues Enforth Development, Inc.  
14 Summer Street  
Malden MA 02148

TELEPHONE 781 870 1100  
FAX 781 870 1199  
ON THE WORLD WIDE WEB [www.qed.com](http://www.qed.com)

EMAIL [corporate@qed.com](mailto:corporate@qed.com)