



Web-Based Intranet Accident Reporting

Track accident data the way you want.

Take the complexity out of accident reporting

We all know filling out complicated accident forms can be a chore in itself. Why not reduce the frustration level of everyone involved by utilizing the latest technology available to track captured information while meeting state conformance.

Forget about complicated forms and codes!



Conforms to State and National standards

Traffic Web conforms to the MMUCC (Model Minimum Uniform Crash Criteria) as published by the Federal Highway Administration (FHWA) and the National Highway Traffic Safety Administration (NHTSA).

JPEG capable!

Traffic Web is compatible with off-the-shelf JPEG capable scanners to integrate drawings with the report and/or electronic submission.

Through the utilization of Q.E.D.'s familiar web-based system users can enter data with english choices rather than hard-to-remember codes associated with every field.

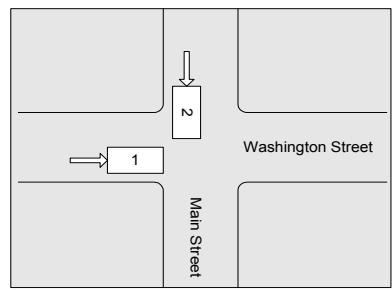
Integrated QuickSearch

Complete integration is provided to Q.E.D.'s QuickSearch module to allow one click retrieval, access to customized reports and superior data analysis. Analyze and retrieve your data the way you want to.

Why fax or mail completed forms when you can submit electronic data to your RMV?

Electronic Submission of CRASH data.

Electronic submission of accident data to the state is supported through XML and FTP interfaces.



Seamless integration with CrimeWeb

Accident Reports appear in departmental journals with other events such as 911 calls, incident report and other log entries.

Reduce the frustration associated with CRASH reporting

Features List

- Conforms to MMUCC and NHTSA standards
- Report validation against submission standards
- English choice lists rather than codes
- Code look-up by chapter/section/title
- Unlimited narrative with spell check
- Integrated to CAD, journals and incidents
- Attach and submit jpeg of accident diagram
- Fully accessible from mobile units
- Flexible ad-hoc searching, reporting and analysis of data

Important Attributes of Traffic Web

Supports Many Configurations

Traffic Web is available to run under Windows NT or 2000 and does not require integration to other Q.E.D. software.

Flexible Access Security

Traffic Web pages can be accessed within your Department, or by selected outside personnel at your discretion. If your network has a Virtual Private Network gateway, you can provide secure access to mobile users via CDPD, or to personnel working from their homes or other remote locations.

Ease of Administration

Software is installed on a central intranet Web server (Web/Partner). Unlike traditional Windows™ software, new versions can be easily installed without having to update software on all PCs.

System Requirements

Traffic Web works in conjunction with Web/Partner.

- A Local Area Network (LAN) with a Windows-NT Server™ running Microsoft Internet Information Server (IIS) is required to provide Web services. Q.E.D. supplies this server with the WEB/Partner product.
- Works with Informix™ On-Line Dynamic Server™ or Informix Standard Engine™ on Unix or NT Server platforms.



Queues Enforth Development, Inc. • 14 Summer Street, Malden, MA 02148
Phone: (781) 321-1864 • FAX: (781) 870-1199 • E-mail: partner@qed.com

Web/Partner, POLICE/Partner, FIRE/Partner are trademarks of Queues Enforth Development, Inc. Other trademarks are of their respective companies.