

Web-Based Training Tools

Computer Aided Training System
For Police, Fire and EMS

- CAD/Partner
- Police/Partner
- Fire/Partner
- Personnel/Partner

From mobile units or in-house, the system uses the interface already familiar to you – your Web browser.

The CAT provides your personnel with relevant training.

Reduce training overtime

Personnel can receive training during their regularly scheduled work shift. Because all lessons are monitored by the computer there is no need to call officers back on overtime to attend training classes.

Build your own lessons

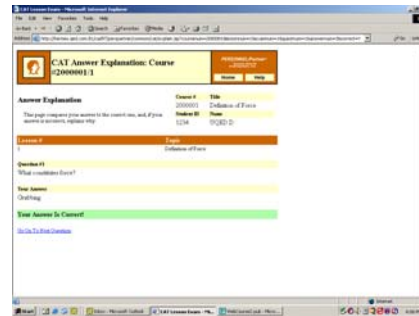
The **CAT** system was designed to allow your training officer to develop lessons that are specific to your agency, each lesson satisfying your department's own unique requirements.

Immediately update lessons

Court rulings and changes in department policy cause previous lessons to become outdated. Using the **CAT** system you can update your lessons and have the changes available to your officers within an hour.

Designed to be accessed from mobile units or in-house systems, providing current knowledge to your officers is quick and effective.

Computer administered exams



The **CAT** system helps you test the understanding of course material by those using the system. You can produce an exam to test on whatever material your department considers most important. The computer will administer the exam. The computer will also correct the exams, providing immediate feedback to the student.

Reduce department liability

Comprehensive training along with well-documented training results can help reduce liability. All exam results are posted to the personnel file of the student.

All lessons become members of the training library maintained on the system for documentation purposes.



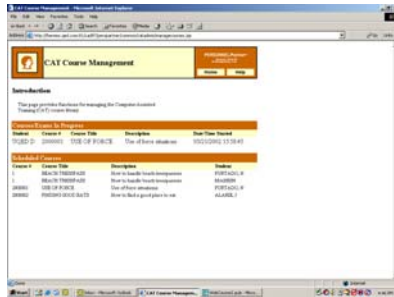
Build a training course library

The CAT system maintains all lessons available for use by the department.

Comprehensive import and export utilities allow departments with this system to share lessons and exams.

Are my employees sufficiently trained?

Where is our weakness?



Course ID	Course Title	Description	Start Date
100000	TUE OF PRACTICE	The officer situation	10/22/2004 11:30 AM

Turn training into information

CAT's comprehensive reporting tools can provide answers to your training questions. You can check an individual student's training progress or the progress of the entire agency, as one example.

With the CAT's simple, centralized architecture, you get up and running quickly.



Course ID	Course Title	Description
100000	TUE OF PRACTICE	The officer situation

Important Attributes of Acuity CAT

Supports Many Configurations

Q.E.D.'s CAD and RMS are not required to utilize the CAT.

Users access the CAT and WEB/Partner through the Microsoft Internet Explorer™ browser.

CAT pages can be accessed within your Department, or by selected outside personnel at your discretion. If your network has a Virtual Private Network gateway, you can provide secure access to mobile users via CDPD, or to personnel working from their homes or other remote locations.

System Requirements

The CAT system works in conjunction with WEB/Partner.

- A Local Area Network (LAN) with a Windows-2000 Server™ running Microsoft Internet Information Server (IIS) is required to provide Web services. Q.E.D. supplies this server with the WEB/Partner product.
- CAT is also available as a service running on our servers. The lessons are accessed with a secure Internet connection.



Queues Enforth Development, Inc. • 14 Summer Street, Malden, MA 02148
Phone: (781) 870-1100 • FAX: (781) 870-1199 • E-mail: partner@qed.com
WEB/Partner, CrimeWeb, POLICE/Partner, FIRE/Partner are trademarks of Queues Enforth Development, Inc. Other trademarks are of their respective companies.